



THE Villager

www.bv.org

A Quarterly Publication Of **Brethren Village**



Interested in what personal care is all about?

Call our Admissions Staff today to see if personal care is the right option for you or your loved one!
(717) 581-4438

Terrace Crossing Personal Care: Free, No-Obligation Tours of Available Units

Terrace Crossing Personal Care, our newest addition to the Village community, continues to welcome new residents, both from inside the Village's continuum and from the broader Lancaster community. Terrace Crossing offers a variety of attractive apartments along with a broad range of individualized services to fit the needs of individuals needing assistance with activities of daily living.

Personal care offers the best of both worlds... independence and freedom yet safety and security. Each residence is part

of our 'personal neighborhood' design that creates small communities of Residents to enjoy dining, socializing, and activities together.

Designed to promote a carefree retirement living experience, Terrace Crossing Personal Care is perfect for supporting individuals who need personal care or memory support care while receiving assistance with activities of daily living such as medication administration, bathing, dressing, meals and transportation.

The Village offers reasonable monthly rates for quality services & amenities and individualized care plans for each of our Residents who reside in Terrace Crossing, and don't forget that three nourishing meals a day are included!

Tour our newest senior care option today by contacting the Supportive Living Admissions Staff at (717) 581-4438.

Calendar OF EVENTS

June 2: Evening of Melody, Wolfe Auditorium, 7:00 PM

June 14: 'Flames Across the Susquehanna', presented by Glenn Banner of the Columbia Historical Society, Wolfe Auditorium, 1:30 PM

June 21: The Dixielanders, Wolfe Auditorium, 2:00 PM

July 19: Duane Abel presents 'Groucho', Wolfe Auditorium, 2:00 PM

July 26: Summer Celtic Celebration, featuring Hannah Eagleson on the Celtic Harp and the dancers from the Hooley School of Irish Dance, Wolfe Auditorium, 2:00 PM

Aug. 23: Ricky and the Gentlemen of Swing present 'Back to the Beach', Wolfe Auditorium, 2:00 PM

Sept. 9: Jim & Wendy Allshouse in concert, Chapel, 3:00 PM

Sept. 13: Brethren Village Gold Tournament, Foxchase Golf Club, Stevens, PA

Sept. 20: Annual Members Meeting, Fieldcrest Great Room, 7:00 PM

Sept. 20: Soul Purpose, Wolfe Auditorium, 2:00 PM

Second Wednesday Monthly: Dementia Support Group, Terrace Crossing Conference Room, 3:00 PM

Please note...

All listed events are open to the public!

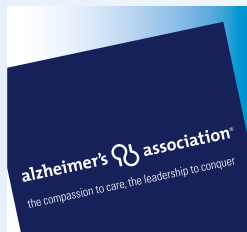
Inside This Issue



Join the Wave Pool Campaign



Golf Tourney 2012



Alzheimer's Support Group



3001 Lititz Pike, P.O. Box 5093
Lancaster, PA 17606-5093



I'M JOINING THE WAVE!

My enclosed gift to *Join the Wave* will help ensure greater wellness enhancements, services and activities for current and future Residents of Brethren Village.

Enclosed is my *Join the Wave* gift for Brethren Village of:

- \$500
- \$1,000
- \$5,000
- \$10,000
- Other _____

My gift is made by (choose one):

Enclosed Check (payable to Brethren Village Pool Campaign)

Credit Card

Name on Credit Card: _____

Signature: _____

Card Type (circle one): VISA or Mastercard

Card Number: _____

Card Expiration Date: _____

Card Verification Number*: _____

(*last 3 digits located on signature strip)

Card Owner Phone Number: _____

My information:

Name(s): _____

Address: _____

City: _____

State & Zip: _____

Phone Number: _____

Email Address: _____

Please remit to:

Brethren Village
Attn: Development
PO Box 5093
Lancaster, PA 17606-5093

Brethren Village is a 501(c)3 charitable organization. Your gift is tax deductible within IRS guidelines.

If you wish to have your name removed from the mailing list to receive future newsletters or fundraising materials supporting Brethren Village, please send a written request to: Director of Development, 3001 Lititz Pike, PO Box 5093, Lancaster, PA 17606-5093

The official registration and financial information of Brethren Village may be obtained from the Pennsylvania Department of State by calling toll free, within Pennsylvania, 1-800-732-0999. Registration does not imply endorsement.



JOIN THE WAVE! Brethren Village's Pool Campaign

Help Brethren Village surge to success and *Join the Wave* as we prepare to build a brand-new aquatic facility on our campus!

Built in 1989, our current 23-year old pool has outlived its life expectancy and is beyond temporary fixes. From Grey & Silver Mermaid shows to youth swimming lessons, our current pool and surrounding structure has been well-used — but is now obsolete, energy-inefficient and in disrepair.

With Resident service and safety at the center of our decision, the Village would like to introduce our new energy-efficient

aquatic facility and provide you the opportunity to contribute to this initiative!

A vital asset to the Village community and beyond, the new facility — coupled with expanded programming — will allow Brethren Village to serve future generations and enhance the lives of our Residents. We are pursuing a campaign with the goal of raising \$160,000 — 22% of the cost of construction — and ask for your support through donations both large and small. Will you join us? We need your support to bring this goal within reach and your gift can help make this facility a reality.

Brethren Village's New Aquatic Facility

NEW Aquatic Facility Features:

- Energy-efficient heating & cooling control
- Large windows offering maximum penetrable natural light
- Brick & stucco exterior with insulated wall panels
- Anti-slip pool surface decking
- Large handicap-accessible men's & women's locker rooms with showers, changing areas & restroom facilities
- Handicap accessible family changing room
- Staff office & storage area for rotating on-duty wellness Team Members
- Dedicated mechanical pump room with private, outdoor access for technician service
- Additional deck space, furniture, seating/resting area for non-swimmers



NEW Pool Features:

- 60 ft. x 30 ft. shallow-water therapy pool with lap swimming accommodations
- 8 ft. x 12 ft. whirlpool tub with dedicated access & entry
- Natural, non-liquid chlorine-free salt water therapy pool
- Zero-entry ramp to accommodate disability & restricted movement requirements
- Regulated temperature controlled therapy pool (89°) and whirlpool tub (99°)
- In-pool bench seating for relaxation & rest

NEW Wellness Programming Features:

- Increased pool size will allow increased class size for aquatic programs
- Increased pool size will allow lap swimming to occur simultaneously with group classes
- Expanded Arthritis Association Foundation approved facility and classes with zero-ramp entry access
- Expanded internal programming capabilities with additional class offerings, class durations and open-swim time for Residents & Team Members
- Expanded external programming capabilities to the local community such as aqua-aerobics & youth swimming lessons

For more information or questions on *Join the Wave*, please contact Joanne Stehr, Director of Development, at (717) 581-4316 or email joannes@bv.org today!



One-Bedroom Apartment Living: Affordable Quality

Life at Brethren Village is what you make it. For some, it's a large cottage with a basement and two-car garage. For others, it's what downsizing is all about... a cozy and intimate living environment in a modern, one-bedroom apartment.

Showcasing and promoting the lifestyle of carefree living, the Village's residential living options are designed to meet Residents' specific needs both large and small.

Brethren Village has several one-bedroom apartments available to tour during the upcoming summer months. One-bedroom apartment living comprises the largest portion of our residential campus representing 181 of 512 units, or 35%.

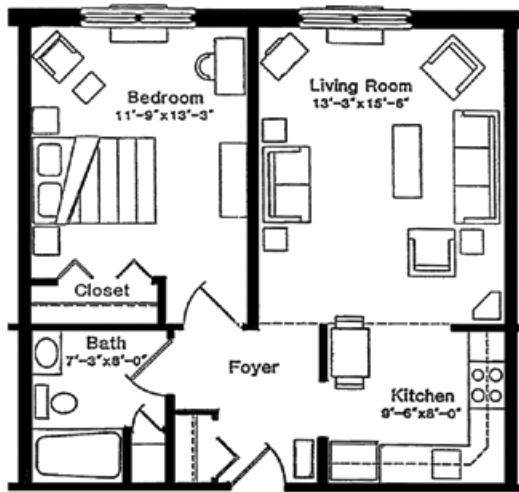
Several financial and service plans are available including a 0% entrance fee refund plan, a 90% entrance fee refund plan, and a recently added rental plan. Our one-bedroom apartments feature an entrance fee ranging from \$0 (650 sq. ft. rental) to \$164,300 (858 sq. ft. 90% refund) and monthly fees ranging from \$775 to \$1,863 based on the plan chosen.

Many apartments include additional amenities such as an outside entrance, a den and balcony. All apartments include a

reserved parking space for Residents with an upgrade option of sheltered parking.

If you didn't think that Brethren Village has something to fit your needs and fit your budget... think again! Explore the possibilities of life at Brethren Village today and schedule an appointment for a tour! More choices.... Your choices!

For additional information, questions, or to visit, please contact the Residential Marketing Department at (717) 581-4227 or email info@bv.org



This Village Townhouse one-bedroom apartment showcases 650 sq. ft. with a full-kitchen, ample living room and private bathroom.

YES...

I want to explore the possibilities!

- Please send a residential marketing packet to the address listed below.
- Please contact me to schedule an appointment with a representative today.
- Please contact me to schedule a campus tour with a representative today.

Name: _____

Address: _____

City: _____

State & Zip: _____

Phone: _____

Email: _____

Please remit to: Brethren Village, Residential Marketing Department, PO Box 5093, Lancaster, PA 17606-5093. In accordance with our Privacy Policy, by providing your name and telephone number above you grant permission for a representative of Brethren Village to communicate with you. Your personal information is confidential and will not be sold or released to other parties.

Questions? Please contact Scott Wissler, Director of Marketing, at (717) 581-4227 or e-mail info@bv.org

Save the Date!

BV Golf Tourney on September 13

Brethren Village's 22nd Annual Golf Tournament at Foxchase Golf Club, Stevens, PA is scheduled for Thursday, September 13, 2012, rain or shine. This year's tournament will feature both an AM and a PM scramble, with registration beginning at 6:30 AM and 12:30 PM. The registration fee includes greens fees, cart, meal, gifts, awards and prizes.

Proceeds benefit the Good Samaritan Fund which supports the current benevolent needs of the Village by providing financial assistance for those Residents who find themselves unable to pay the full cost of their care.

Reservations for sponsorship opportunities are currently underway and include various levels such as a hole sponsor, patron sponsor and prize sponsor. If you would like additional information on ways to support this event, please contact Joanne Stehr, Director of Development, at (717) 581-4316.



Summer 2012

Official Publication of Brethren Village
Retirement Community



3001 Lititz Pike, P.O. Box 5093
Lancaster, PA 17606-5093
Telephone: 717-581-4227 or
800-367-9899
www.bv.org
www.twitter.com/BrethrenVillage
www.facebook.com/BrethrenVillage



Our Vision

Enriching each life touched by our ministry at Brethren Village.

Our Mission

Rooted in the tradition of service within the Church of the Brethren, the mission of Brethren Village is to provide a continuum of services and Christ-like care to support the aging process and to enhance the spiritual, physical, social and emotional wholeness of Residents, Team Members, and community.

Board of Directors

Chairman

F. Barry Shaw

Vice Chairman

Carol D. Hess

Treasurer

Steven L. Faus

Secretary

David L. Hawthorne

Assistant Secretary / Treasurer

Steven L. Edris

Directors

Evelyn Dehmey

Douglas F. Deihm

Kathy M. Long

Alan R. Over

Wilbur G. Rohrer

Larry D. Sauder

John N. Snader

Director Emeritus

Henry H. Gibbel

Director Emerita

S. Joan Hershey

Carroll L. Kreider

Resident Representative

Linda J. Heck

Auxiliary President

Elizabeth Martin

Resident Council President

Leon E. Whiteman

President

Gary N. Clouser, NHA

Vice President Finance

Pamela S. Formica, CPA

Vice President Support Services

Philip S. Hollinger

Editor

Scott Wissler, Director of Marketing

*Brethren Village is an
Equal Opportunity Employer*



Opt-Out Policy

If you wish your name removed from the mailing list to receive future newsletters or fundraising materials supporting Brethren Village, please send a written request to: Director of Development, 3001 Lititz Pike, P.O. Box 5093, Lancaster, PA 17606-5093.

The official registration and financial information of Brethren Village may be obtained from the Pennsylvania Department of State by calling toll free, within Pennsylvania, 1-800-732-0999. Registration does not imply endorsement.

Family & Caregiver Support Group Available

Brethren Village invites family members, friends and caregivers whose lives have been affected by dementia related illnesses — including Alzheimer's — to join our Dementia Support Group.

Open to the Lancaster community, the group focuses on providing in-depth education, practical suggestions and support on all topics related to dementia. Topics often include common behaviors, interventions, medications, stress relief, respite options, creating meaningful connections and finding moments of joy.

Aimed to serve the general public and the Village community, the group operates as part of the Alzheimer's Association. Meetings last 1-hour in length, and are held on the second Wednesday of every month, beginning at 6:30 PM, in the Terrace Crossing Conference Room.

For more information or questions

about this program, please contact program facilitator Tara Wiker, Memory Support Program Coordinator at Brethren Village, at 717-581-4208.



Welcome to New Residents

Brethren Village would like to welcome the following individuals to the Residential Living portion of our campus community:

FEBRUARY 2012

Catherine E Harnish Oakwood House, formerly of Lancaster
Lynda Hicks Village Garden Apartments, formerly of Ephrata
John & Fran Eberly Fieldcrest, formerly of Lititz
James Register Fieldcrest, formerly of Manheim

MARCH 2012

Eugene (Bud) Ludwig Village Townhouse, formerly of Lititz
J. Russell & Mary Kreider Fieldcrest, formerly of Lancaster
Walter & Alice Repa Fieldcrest, formerly of Quakertown
Mary Lou Jurko Oakwood House, formerly of Oak Ridge, TN
Charlotte O'Brien Fieldcrest, formerly of Lancaster
John Wagner Village Townhouse, formerly of Elizabethtown
Kenneth & Faye Nye Fieldcrest, formerly of Lancaster

APRIL 2012

Frances Pollack Fieldcrest, formerly of Mt. Joy
Julia Gladfelter Oakwood House, formerly of Salunga
Margaret Powell Oakwood House, formerly of Myrtle Beach, SC
Bill & Janet Groff Fieldcrest, formerly of Lititz
Walter & Joan Bechtold Cottage, formerly of Lancaster

(New Resident List as of April 30, 2012.)

