



# THE Villager

www.bv.org

A Quarterly Publication Of Brethren Village

## Terrace Crossing September 26 Presentation: 'Care Decisions for Your Parents'



Is it time to transition Mom or Dad from home? Make the best care decisions for your parents— without guilt— and come join us for a Terrace Crossing sponsored event on

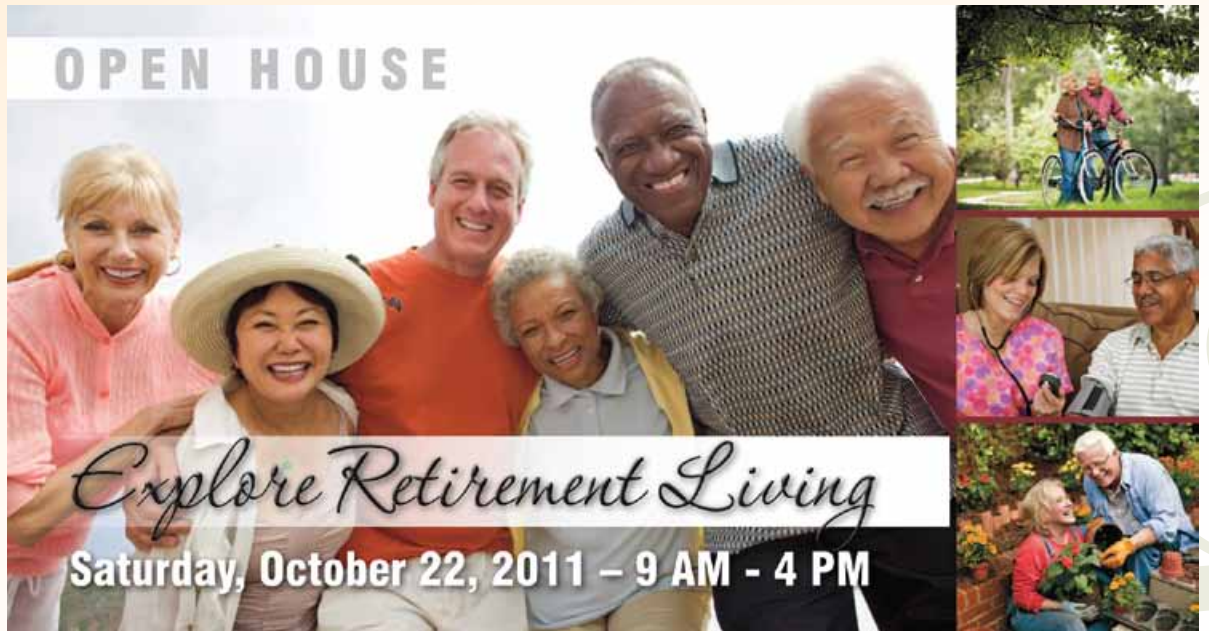
Monday, September 26 at 6:00pm in the Wolfe Auditorium for an uplifting presentation by geriatric expert, Susan Scanland.

With humor and compassion, she will help you understand you're not alone and give positive advice for making this important decision without guilt. This is a free educational presentation and is open to the public.

Scanland is a gerontological nurse practitioner and certified dementia practitioner with 30 years of experience working in long-term care, personal care and home care. A dementia consultant, she teaches geriatrics in the family nurse practitioner graduate program at the University of Scranton and is founder and CEO of Dementia Connection™, a



geriatric education business. To RSVP for this presentation, please contact the Supportive Living Admissions Staff at 717-581-4438 or reserve your space online at [www.bv.org/TCevent](http://www.bv.org/TCevent)



## Brethren Village Showcased in Open House Tour

There are many important benefits of living in a Continuing Care Retirement Community (CCRC) like Brethren Village. In order to fully understand these benefits, it's important to explore what a CCRC is... by visiting one!

Prospective Residents and community members are invited to truly explore all that Brethren Village has to offer. **Brethren Village is participating in a free, open-to-the public, county-wide 'Explore Retirement Living Open House Tour' on October 22, 2011 from 9:00 AM-4:00 PM.**

Joining forces with 14 other communities in Lancaster County, the tour will allow visitors to explore our dining venues, extensive wellness facilities, amenities and view open cottages and apartments.

Brethren Village has a wide selection of residential apartments, personal care apartments and cottages ranging from 350 square feet to 2,300 square feet. Residents within our community can enjoy the security and conveniences of Brethren Village by investing as little as \$17,500 on an entrance fee and \$605 on a monthly service fee.

Join us and explore! No RSVP is needed for our Open House Tour. For more details, an event map and a schedule of the day's programs and locations, please visit [www.bv.org/openhouse](http://www.bv.org/openhouse) or <http://exploreretirementliving.org>

### Inside This Issue



Home Care Hits the Road!



Tour a Fieldcrest Redwood Apartment!



Leaving A Legacy!



3001 Lititz Pike, P.O. Box 5093  
Lancaster, PA 17606-5093

NON-PROFIT ORG.  
U.S. POSTAGE  
PAID  
LANCASTER, PA  
PERMIT NO. 6

You're Invited

**Explore Retirement Living  
Open House Tour**

**October 22, 2011  
9:00 AM - 4:00 PM**

**on the Village campus**

**Visit [www.bv.org/openhouse](http://www.bv.org/openhouse)  
for more information!**



## Village Appoints New Board Members

The Brethren Village Board of Directors recently welcomed two new members of the Board at the September 15, 2011 Annual Members Meeting.

Kathy M. Long, of Lancaster, was elected to serve a three-year term on Brethren Village's Board of Directors effective October 1, 2011.

A Mountville Church of the Brethren member, Long is co-owner and office manager of her family landscaping business and was previously employed as a live, on-camera talent for QVC in West Chester, PA. Receiving her undergraduate degree from Westminster College, Long is also a real estate agent.

John N. Snader, of Ephrata, was also elected to serve a three-year term on Brethren Village's Board of Directors effective October 1, 2011.

A Lancaster Church of the Brethren member, Snader is the Senior Vice President for Customer Experience at the Ephrata Community Hospital. Receiving his undergraduate degree from Elizabethtown College and M.B.A. from Saint Joseph's University, Snader is a Fellow in the American College of Healthcare Executives and College of Physicians of Philadelphia.

Current Board members S. Joan Hershey and Carroll L. Kreider have accepted the role of Director Emeritus and Carol D. Hess has accepted the role of Vice Chairman, all effective October 1, 2011.

## BV Named To E-Power Energy-Smart Business Honor Roll By PPL Electric Utilities

Brethren Village was named to the E-power® Energy-Smart Business Honor Roll by PPL Electric Utilities for various energy efficient choices made throughout our 3-year redevelopment project.

From energy efficient appliances to exterior wall insulation, Brethren Village yielded more than \$98,900 in rebate checks from PPL Electric Utilities. Being energy-efficient demonstrates the Village's commitment to financial stewardship and our commitment toward better energy and environmental practices.



## BV Home Care Celebrates Department Achievements

Brethren Village Home Care received a deficiency-free 2011 annual survey from the Department of Health. This is the first survey for Brethren Village under the new Home Care regulations in the Commonwealth of Pennsylvania. Brethren Village would like to extend their gratitude and appreciation to all our Home Care Team Members! Their dedication and commitment made this positive survey possible.

Additionally, the Brethren Village Auxiliary recently gifted a 2011 Subaru Forrester for the Home Care department for use in transporting campus Residents. Home Care Team Members accompany Residents to on-campus and off-campus appointments including doctor and specialist visits. The purchase of this vehicle accommodates the growing need of Home Care to safely serve our Residents.

For additional information or questions on Brethren Village Home Care, please call (717) 581-4294 or email [info@bv.org](mailto:info@bv.org)

## Wagner Family Trust Touching Lives

Steeped full in a rich family connection with Brethren Village, Irvin Wagner left a legacy after his death through the Wagner Family Trust.... touching lives through generosity.

Always active in the Church of the Brethren, Irvin Wagner was born on a dairy farm in Ridgeley, Maryland. Moving to Quarryville to work for his uncle, Caleb Bucher, Irvin married Marie Grove and worked as a farm manager and Guernsey cow breeder for most of his life.

Irvin's connection to the Village was through his sister Mary, who suffered from a cognitive disability and moved to the 'Brethren Home.' Also, Irvin's uncle Calvin Wagner, served on the Board of Directors at Brethren Village during the 1960s.

Irvin always knew the importance of charitable giving to others, so when arranging his estate plans he remembered

the caring and kindness shown to his sister Mary many years ago. In return, Irvin wanted to pass on the legacy of generosity. Irvin is a heart-warming example of selfless giving... to assist the Village in our mission of providing Christ-like care.

If you are interested in unique opportunities to support the Brethren Village's ministry, please contact Joanne Stehr, Director of Development, at (717) 581-4316 or e-mail [giving@bv.org](mailto:giving@bv.org)



## Terrace Crossing Apartments Available

Supportive Living at Brethren Village—which includes both personal care and skilled care—is a vital component in the Village's Resident-centered continuum of services.

Terrace Crossing Personal Care, our newly opened building, enables Residents to live in a comfortable, private and independent setting while receiving assistance with activities of daily living such as medication administration, bathing, dressing, meals and transportation. With affordable options, memory support

accommodations offer immediate availability, Terrace Crossing offers all the conveniences of living in a safe and secure retirement community.

Apartments range from 280–941 square feet with private suites, one-bedroom suites and two-bedroom suites all with personal full baths and many with kitchenettes.

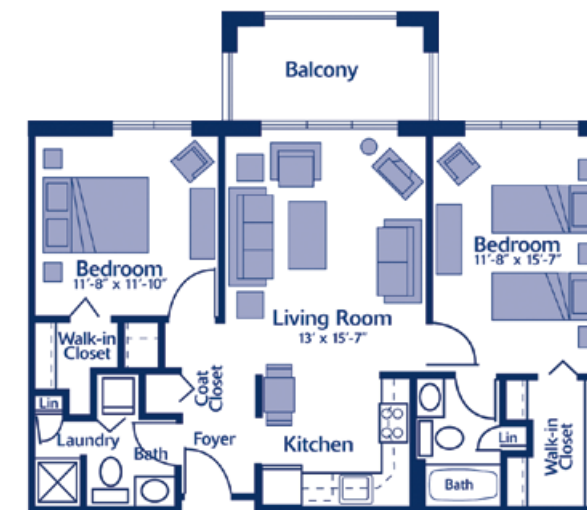
To learn more about Terrace Crossing or to schedule a tour, please contact the Supportive Living Admissions Staff at (717) 581-4438.



## Apartment Spotlight: Fieldcrest Redwood Two-Bedroom

Designed to promote carefree retirement living, the Village's residential living options complement the comfort and convenience found by living in a retirement community. Prospective Residents have a choice of many different residences that are designed to meet their specific needs, from various apartment layouts to spacious cottages.

Our featured apartment is the 975 square foot Fieldcrest Redwood two-bedroom apartment that includes two bedrooms with walk-in closets, two bathrooms (one with a tub, one with a shower), kitchen and living room. Additionally, most Redwood apartments include a patio or balcony. Entrance fees for the Redwood apartment range from \$123,700 to \$129,900 with a traditional monthly fee of \$962 for an individual or \$1,181 for a couple.



The Redwood apartment is located within our Fieldcrest building with direct access to Chives and Perkissimo dining options, a convenience store, a study with computer and internet access, wellness facilities and sheltered parking.

If a Redwood two-bedroom or larger apartment up to 1,600 square feet fits your lifestyle, come and explore the possibilities of life at Brethren Village today. For additional information or to schedule a tour, please contact the Residential Marketing Department at (717) 581-4227 or email [info@bv.org](mailto:info@bv.org)

Yes...

### I want to explore the Village!

- Please send a residential marketing packet to the address listed below.
- Please contact me to schedule an appointment with a representative today.
- Please contact me to schedule a campus tour with a representative today.

Name: \_\_\_\_\_  
 Address: \_\_\_\_\_  
 City: \_\_\_\_\_  
 State & Zip: \_\_\_\_\_  
 Phone: \_\_\_\_\_  
 Email: \_\_\_\_\_

**Please remit to:** Brethren Village, Residential Marketing Department, PO Box 5093, Lancaster, PA 17606-5093. In accordance with our Privacy Policy, by providing your name and telephone number above you grant permission for a representative of Brethren Village to communicate with you. Your personal information is confidential and will not be sold or released to other parties.

**Questions?** Please contact Scott Wissler, Director of Marketing, at (717) 581-4227 or e-mail [info@bv.org](mailto:info@bv.org)

## Marketing & Development Office Renovations Complete

During the 3-year span of our recent redevelopment effort, Brethren Village has gone through a period of unprecedented growth and transformational change. As we experience increased foot traffic and interest in living at the Village, our Residential Marketing and Development offices located at 505 Airport Road, have been fully renovated during July and August. Aimed to create an improved sales and work environment, the newly reconfigured space features additional offices, a formal reception area, waiting area, and sample show room.

Due to the planned combination of sales teams, the Covenant Crossing Sales offices formerly located in Fieldcrest has closed. The Village is eager to meet the needs of our growing community by renovating our offices and invite you to stop by for a visit.

For additional information or to schedule a tour, please contact the Residential Marketing Department at (717) 581-4227 or email [info@bv.org](mailto:info@bv.org)

# Fall 2011

Official Publication of  
Brethren Village Retirement Community



3001 Lititz Pike, P.O. Box 5093  
Lancaster, PA 17606-5093  
Telephone: 717-581-4227 or  
800-367-9899

www.bv.org  
www.twitter.com/BrethrenVillage  
www.facebook.com/BrethrenVillage



### Our Vision

Enriching each life touched by our  
ministry at Brethren Village.

### Our Mission

Rooted in the tradition of service  
within the Church of the Brethren, the  
mission of Brethren Village is to provide  
a continuum of services and Christ-like  
care to support the aging process and  
to enhance the spiritual, physical, social  
and emotional wholeness of Residents,  
Team Members, and community.

### Board of Directors

#### Chairman

F. Barry Shaw

#### Vice Chairman

Carol D. Hess

#### Treasurer

Steven L. Faus

#### Secretary

David L. Hawthorne

#### Assistant Secretary / Treasurer

Steven L. Edris

#### Directors

Evelyn Dehmey

Douglas F. Deihm

Kathy M. Long

Alan R. Over

Wilbur G. Rohrer

Larry D. Sauder

John N. Snader

#### Director Emeritus

Henry H. Gibbel

S. Joan Hershey

Carroll L. Kreider

#### Resident Representative

Linda J. Heck

#### Auxiliary President

Elizabeth Martin

#### Resident Council President

Leon E. Whiteman

#### President

Gary N. Clouser, NHA

#### Vice President Finance

Pamela S. Formica, CPA

#### Vice President Support Services

Philip S. Hollinger

#### Editor

Jolene L. Weaver

Public Relations Manager

*Brethren Village is an  
Equal Opportunity Employer*



#### Solicitation Policy

If you wish your name removed from the mailing list  
to receive future newsletters or fundraising materials  
supporting Brethren Village, please send a written  
request to: Director of Development, 3001 Lititz Pike,  
P.O. Box 5093, Lancaster, PA 17606-5093.



## Calendar of Events

**September 26:** 'Care Decisions for Your Parents,' Wolfe Auditorium, 6:00 PM

**October 1:** Love Feast hosted by Ephrata COB, Wolfe Auditorium, 6:00 PM

**October 20:** 'Radio Days' Fall Fest, Wolfe Auditorium, 12:30 PM-3:30 PM

**October 22:** Open House Tour on BV Campus, 9:00 AM-4:00 PM

**October 23:** Service of Remembrance, BV Chapel, 3:00 PM

**November 13:** Cellist Jacqueline Choi, Wolfe Auditorium, 3:00 PM

**November 17:** Annual Spiritual Life Meeting, Wolfe Auditorium, 9:30 AM

**November 17:** Musical Entertainment, Wolfe Auditorium, 2:00 PM

**November 23:** Thanksgiving Eve Service, BV Chapel, 2:00 PM

**November 30:** Advent Communion, BV Chapel, 2:00 PM

**November 30:** Village Voices Men's Choir Program, Wolfe Auditorium, 7:00 PM

**Second Wednesday Monthly:** Dementia Support Group, Terrace Crossing  
Conference Room, 3:00 PM

# Welcome

## TO NEW RESIDENTS

Brethren Village would like to welcome the following individuals to the  
Residential Living portion of our campus community:

### April 2011

Madalyn Kovalchik.....Fieldcrest, formerly of East Petersburg  
Jere & Louise Huber.....Village Townhouse, formerly of East Petersburg  
Jay & Marie Brenneman.....Cottage, formerly of Lititz

### May 2011

Zelma Tome.....Fairview Meadows, formerly of Millersville  
Dolores Reilly.....Fieldcrest, formerly of Lancaster  
Miriam Willverth.....Village Townhouse, formerly of Ephrata  
Hazel Hoak.....Cottage, formerly of Lancaster  
Sally Davis.....Fieldcrest, formerly of Lancaster  
Ardie Wolgemuth.....Fieldcrest, formerly of East Petersburg  
Alice DeSieghardt.....Fieldcrest, formerly of Mt. Joy

### June 2011

Fern Haley.....Village Townhouse, formerly of Manheim  
Harold & Nancy Lefever.....Fieldcrest, formerly of Lancaster  
David & Audrey Nonnenmocher.....Fieldcrest, formerly of Leola  
Nancy Herr.....Fieldcrest, formerly of Lancaster  
John Wood, Sr.....Fieldcrest, formerly of Lititz  
Helen Hossler.....Fieldcrest, formerly of Elizabethtown  
Doris Gallion.....Village Garden Apartments, formerly of Lititz  
Nevin & Dee Gish.....Fieldcrest, formerly of Manheim  
Nathan Garonzik.....Fieldcrest, formerly of Lancaster  
Richard & Mary Wilson.....Fieldcrest, formerly of Lititz

### July 2011

Regina Greenawalt.....Village Garden Apartments, formerly of Lancaster  
Wanda Carr.....Fieldcrest, formerly of Mt. Joy  
Charles Calia.....Oakwood House, formerly of Lancaster

### August 2011

Joan Keesey.....Fieldcrest, formerly of Manheim  
Ruth Horning.....Fieldcrest, formerly of Denver  
John & Marion Jerrell.....Village Townhouse, formerly of Strasburg  
Gene & Fern Bucher.....Cottage, formerly of East Petersburg

*(New Resident List as of September 1, 2011.)*